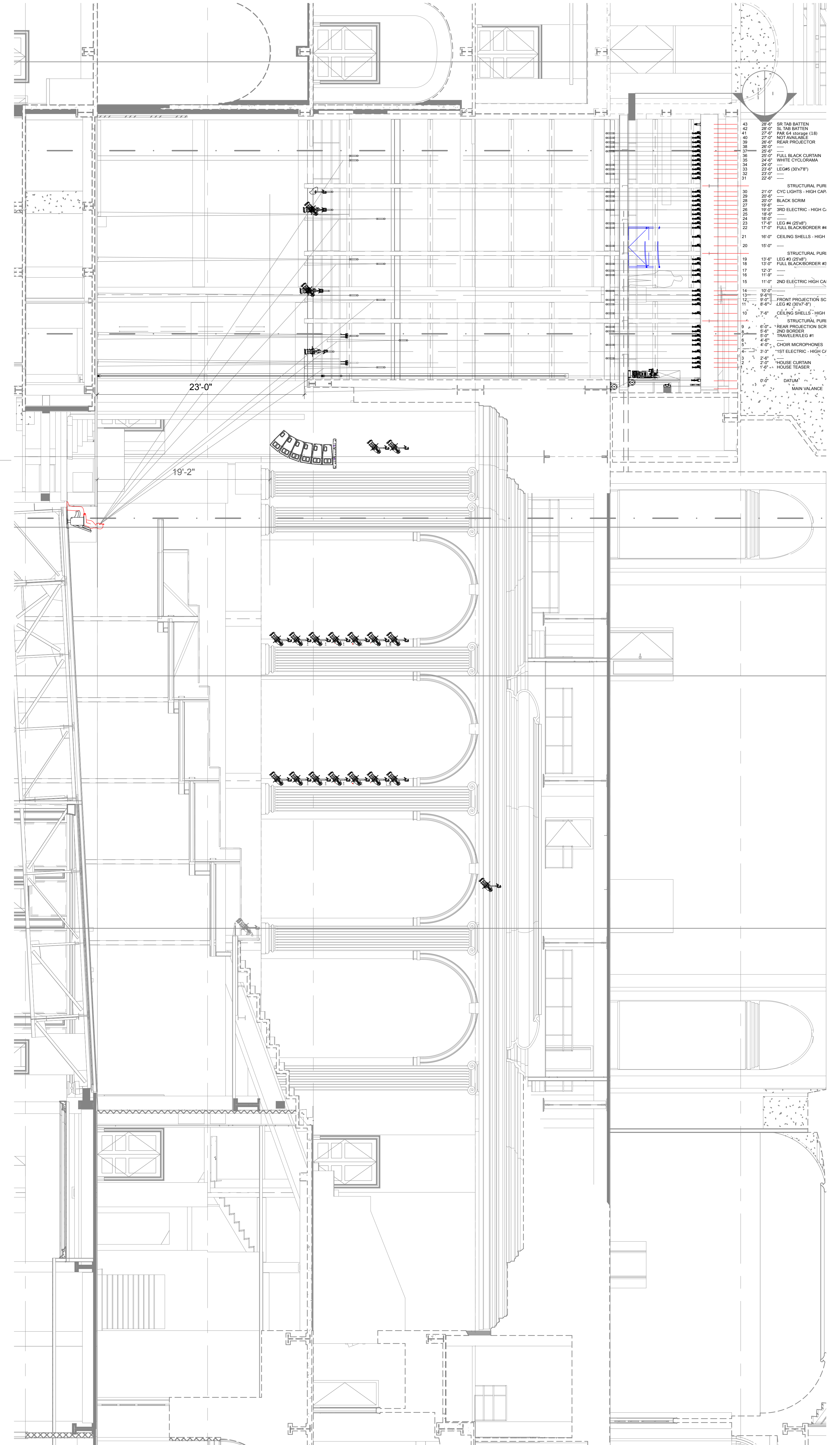


- 28'-0" SR TAB BATTEN
- 28'-0" SR TAB BATTEN
- 28'-0" SR TAB BATTEN (LB)
- 28'-0" SR TAB BATTEN (LB)
- 28'-0" REAR PROJECTOR
- 28'-0" REAR PROJECTOR
- 28'-0" FULL BLACK CURTAIN
- 28'-0" WHITE CYCLOPAMA
- 28'-0" LEGAS (DXT'P)
- 31'-0" STRUCTURAL PURLIN CENTERLINE
- 21'-0" CYC LIGHTS - HIGH CAPACITY
- 21'-0" BLACK SCRM
- 21'-0" 2ND ELECTRIC - HIGH CAPACITY
- 18'-0" LED H/GRD'P
- 17'-0" FULL BLACKORDER #4 (3 OF 30'x15')
- 17'-0" CEILING SHELLS - HIGH CAPACITY
- 16'-0" STRUCTURAL PURLIN CENTERLINE
- 16'-0" FULL BLACKORDER #3 (3 OF 30'x15') HIGH CAPACITY
- 15'-0" 2ND ELECTRIC HIGH CAPACITY
- 14'-0" FRONT PROJECTION SCREEN (19'x25')
- 14'-0" LEGAS (DXT'P)
- 12'-0" CEILING SHELLS - HIGH CAPACITY
- 9'-0" REAR PROJECTION SCREEN (19'x25')
- 9'-0" 2ND BARGE
- 9'-0" TRAVELERLED #1
- 9'-0" CYCER MICROPHONES
- 9'-0" 1ST ELECTRIC - HIGH CAPACITY
- 9'-0" HOUSE CURTAIN
- 9'-0" HOUSE TRUSSER
- 0'-0" DATA
- MARK VALANCE

Symbol Key

	2
	4
	6
	30
	4
	15
	12
	4
	6
	9

1 Herbst Theater Light Plot
Scale: 3/16"=1'0"



- 28'-0" SR TAB BATTEN
- 28'-0" SR TAB BATTEN
- 28'-0" SR TAB BATTEN (LB)
- 28'-0" SR TAB BATTEN (LB)
- 28'-0" REAR PROJECTOR
- 28'-0" REAR PROJECTOR
- 28'-0" FULL BLACK CURTAIN
- 28'-0" WHITE CYCLOPAMA
- 28'-0" LEGAS (DXT'P)
- 31'-0" STRUCTURAL PURLIN CENTERLINE
- 21'-0" CYC LIGHTS - HIGH CAP.
- 21'-0" BLACK SCRM
- 21'-0" 2ND ELECTRIC - HIGH CA.
- 18'-0" LED H/GRD'P
- 17'-0" FULL BLACKORDER #4 (3 OF 30'x15')
- 17'-0" CEILING SHELLS - HIGH
- 16'-0" STRUCTURAL PURLIN CENTERLINE
- 16'-0" FULL BLACKORDER #3 (3 OF 30'x15') HIGH CAP.
- 15'-0" 2ND ELECTRIC HIGH CA.
- 14'-0" FRONT PROJECTION SC
- 14'-0" LEGAS (DXT'P)
- 12'-0" CEILING SHELLS - HIGH
- 9'-0" REAR PROJECTION SC
- 9'-0" 2ND BARGE
- 9'-0" TRAVELERLED #1
- 9'-0" CYCER MICROPHONES
- 9'-0" 1ST ELECTRIC - HIGH CA
- 9'-0" HOUSE CURTAIN
- 9'-0" HOUSE TRUSSER
- 0'-0" DATA
- MARK VALANCE

2 Herbst Theater Section
Scale: 3/16"=1'0"

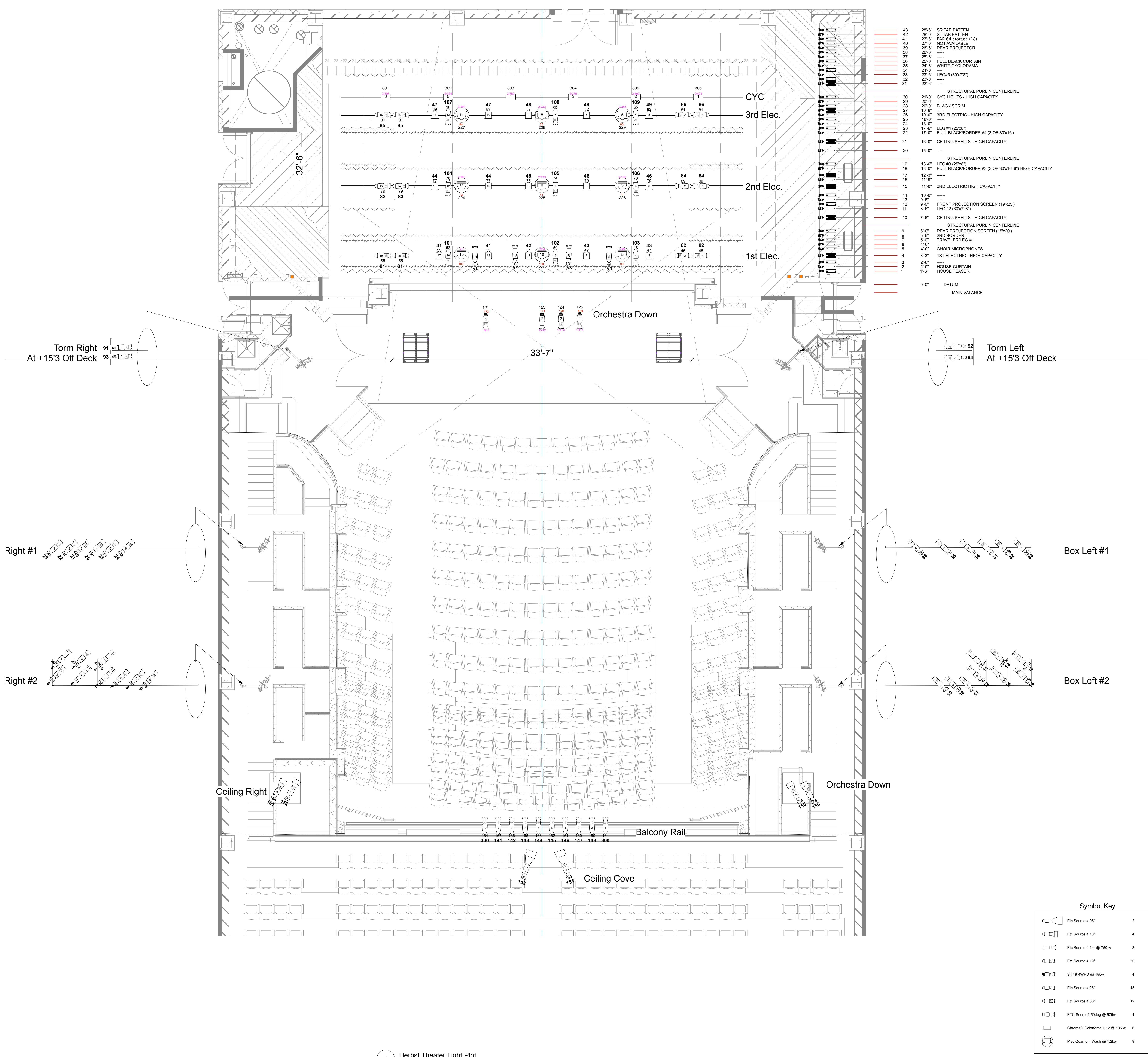
HERBST THEATRE

DESIGNED BY:
DRAWN BY:
PM
SCALE: 3/16"=1'0"
DATE: 1/24/2020
JOB LINE:

HERBST THEATRE

DESIGNED BY:
DRAWN BY:
SCALE: 3/16"=1'0"
DATE: 1/24/2020
JOB LINE:

LOCATION:
Light Plot



- 45 28'-0" SIR TAB BATTEN
- 44 28'-0" SL TAB BATTEN
- 43 27'-0" PAR #4 (30x16) (18)
- 42 27'-0" NOT AVAILABLE (18)
- 41 26'-0" REAR PROJECTOR
- 40 26'-0" REAR PROJECTOR
- 39 25'-0" FULL BLACK CURTAIN
- 38 24'-0" WHITE CYCLORAMA
- 37 23'-0" LEG #5 (30x7'8")
- 36 22'-0" ---
- 35 22'-0" ---
- 34 21'-0" STRUCTURAL PURLIN CENTERLINE
- 33 21'-0" CYC LIGHTS - HIGH CAPACITY
- 32 20'-0" BLACK SCRM
- 31 19'-0" 3RD ELECTRIC - HIGH CAPACITY
- 30 18'-0" ---
- 29 24'-0" ---
- 28 17'-0" LEG #4 (25x7)
- 27 17'-0" FULL BLACK/BORDER #4 (3 OF 30x16)
- 26 21'-0" CEILING SHELLS - HIGH CAPACITY
- 25 15'-0" ---
- 24 15'-0" ---
- 23 15'-0" STRUCTURAL PURLIN CENTERLINE
- 22 13'-0" LEG #3 (25x7)
- 21 13'-0" FULL BLACK/BORDER #3 (3 OF 30x16-6") HIGH CAPACITY
- 20 12'-3" ---
- 19 11'-0" ---
- 18 11'-0" 2ND ELECTRIC HIGH CAPACITY
- 17 10'-0" ---
- 16 9'-0" FRONT PROJECTION SCREEN (19x25)
- 15 8'-6" LEG #2 (30x7'8")
- 14 7'-8" CEILING SHELLS - HIGH CAPACITY
- 13 7'-8" STRUCTURAL PURLIN CENTERLINE
- 12 6'-0" REAR PROJECTION SCREEN (15x20)
- 11 5'-0" 2ND BORDER TRAVELER/LEG #1
- 10 4'-0" CHOR MICROPHONES
- 9 3'-3" 1ST ELECTRIC - HIGH CAPACITY
- 8 2'-0" HOUSE CURTAIN
- 7 1'-6" HOUSE TEASER
- 6 0'-0" DATUM
- 5 0'-0" MAIN VALANCE

Symbol Key

	ETC Source 4 50'	2
	ETC Source 4 10'	4
	ETC Source 4 14' @ 750 w	8
	ETC Source 4 19'	30
	S4 19-4WRD @ 155w	4
	ETC Source 4 28'	15
	ETC Source 4 36'	12
	ETC Source 4 50' @ 075w	4
	Chroma2 Colorforce II 12 @ 135w	6
	Mac Quantum Wash @ 1.2kw	9

1 Herbst Theater Light Plot
Scale: 1/4"=1'0"